

NEW LIFE RADIOLOGY VETerinary DIVISION

X Ray Better...



X-Ray Vet Table CRONO30



CRONO30 is a high performance system for radiographic examinations for the veterinary field. Featuring high efficiency and small dimensions, it is fully manageable through the intuitive touch screen interface. The system can be equipped with both fixed and mobile RX digital systems.

DEDICATED SOFTWARE INTERFACE

Operational mode with technical 2 points or 3 points, selectable from touch screen

- Two points KV - mAs selectable from touch screen
- Three points KV - mA - msec selectable from touch screen
- Anatomic program (APR)
- Small / large focus selection
- Different levels of the system access with password
- Interface for x-ray parameters (KV - mAs)
- State system messages
- Exposition parameters: free selection or with anatomic technical
- **Selection kV** from 40 to 125 kV +1 kV steps
- **Selection mA** Small focus from 0 a 160 mA
- **Selection mA** Large focus from 160 to 400 mA
- **Selection mAs** from 0,6 to 125 mAs
- **KV** and **mAs** selection in anatomic techniques with APR

Protection

- Control and filament protection
- Over current and overvoltage protection
- Overload protection of X-ray tube

Recording

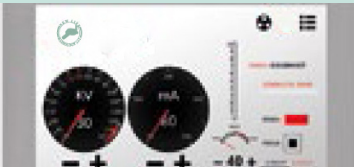
Dedicated storage area for events and / or any warnings with different level of password for analysis by the service.

FEATURES

- Patient table top, mobile in 4 directions with mechanical brakes stand with monoblock F.F.D. 110 cm, cassette tray up to 43x43 cm
- Removable grid 150 lam./" size 44x48cm
- Rx electronic control under patient table top
- Color touch screen integrated in the monoblock.

- Integral control of MX systems, with PLC.
- 2 point technique (KV - mAs) and 3 points
- Integral control of CRONO30 systems
- Automatic control of mA values during radiography for constant performance over time.
- Anatomical techniques programmed on

- programmable by the operator
- Checking the capacitor charge.
- Predisposition for all Digital Systems on the market



TECHNICAL CHARACTERISTICS

Ingresso tensione linea Mains Voltage	230 V ~ ± 10%
Frequenza Frequency	50/60 Hz
Assorbimento Current	7A impulsivi/impulsive
Resistenza linea Mains resistance	1 Ohm
Classe isolamento Insulation class (IEC60601-1)	Classe/Class I
Parti applicate Applied parts	Tipo/Type B

X-RAY INSERT - Bifocal with rotating anode

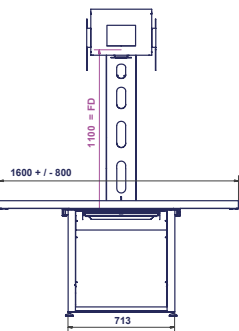
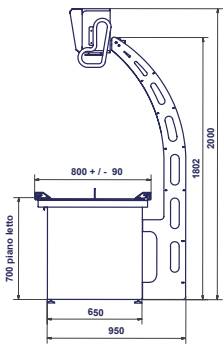
Fuoco piccolo Small focus	0,6 - 0,8
Fuoco grande Large focus	1,3
Rotazione anodo Rotating anode	2.800 rpm
Diametro anodo Anode diameter	60 mm
Anodo Anode	tungsteno tungsten
Massima dissipazione termica anodo Max heat anode dissipation	300 W
Capacità termica Heat capacity	80 kj - 112 kJH
Angolo anodo Anode angle	15°

HIGH FREQUENCY X-RAY TUBE HEAD

Frequenza Frequency	20 kHz
Massima potenza Max Power	30 kW
Massima tensione Max High Voltage	125 kV
kV Ripple<	2%
Capacità termica Heat capacity	600 kj - 800 kJH

HIGH FREQUENCY GENERATOR

Potenza Power	30 kW
Frequenza operativa Operational frequency	20 kHz
kV range in steps da 1kV veterinaria from 40 kV to 125 kV Max99 kV for veterinary	da 40 kV a 125 kV, 99 kV massimi per veterinaria from 40 kV to 125 kV Max99 kV for veterinary
kV range in steps of 1kV	da 40 kV a 125 kV, 99 kV massimi per veterinaria from 40 kV to 125 kV Max99 kV for veterinary
mA range (fuoco fine) mA range (small focus)	80 - 160
mA range (fuoco grande) mA range (large focus)	160 - 400
mAs range	da 0,6 a 125 from 0.6 to 125
Tempo esposizione Times range	da 4 ms a 1,5 s from 4 ms to 1,5s
Tecnica APR	2 punti/points (kV - mAs)



PORTABLE GENERATORS

Series of VET portable x-ray units



9020HF



1040HF



1060HF



ULTRA 100

Powerful and stable output with unique features for user convenience. ECORAY high frequency inverter technology is becoming more valuable, durable and powerful to produce high quality images with every imaging solution.

Portable X-ray generators can be used for veterinary diagnostic purposes.

It is a light, compact and powerful X-ray machine that you can easily transport from one place to another.



NEW LIFE RADIOLOGY also offers the possibility to buy the CRONO30 table together with the portable equipment, in order to have a fixed workstation inside the clinic.

Type	Model	9020HF	1040HF	1060HF	Ultra100
Generator		High frequency inverter			
HF Generator	Max output power	1.35kW (90kV@15mA)	2.4kW (80kV@30mA)	3.2 kW (80kV@40mA)	5kW (100kV@50mA)
	Max	90kV / 20mA	100kV /40mA	100kV /60mA	110kV/100mA
X ray Tube	Focal Spot	1.2mm x 1.2mm	1.2mm x 1.2mm	2.0mm x 2.0mm	1.8mmx1.8mm
Input Power		100-120VAC, 60Hz 220-240VAC,50Hz		220-240VAC, 50Hz ONLY	
Collimator	X-ray Field Size	Max. 27cmx27cm @66cm SID	Max. 35cmx35cm @66cm SID	Max.40cmx40cm @100cm SID	
	Lamp	12V / 50W, Halogen Lamp			LED lamp
User Interface	Dual laser	66cm SID, Class II			100cm SID Class I
	Display	kV, mAs, X-Ray, Wait, and Error LED display			
APR	Operation Switch	1. kV & mAs Up/Down 2. Built in dual laser & Collimator lamp ON/ OFF 3. Reversible Display 4. APR memory storage			
		7 Memory Standard and extendable 12 Memory	8	128 APR	
Weight		7kgs	12.5kgs	13.5kgs	18kgs
Dimension (mm)		270 x 150 x140	344 x 191 x 188	344 x 210 x 191	396 x 295 x 204
Advantage		Light weight	Wide use	Popular	Auto SID by Ultrasonic sensor

DIGIVET C

(43X43cm 139 µm)



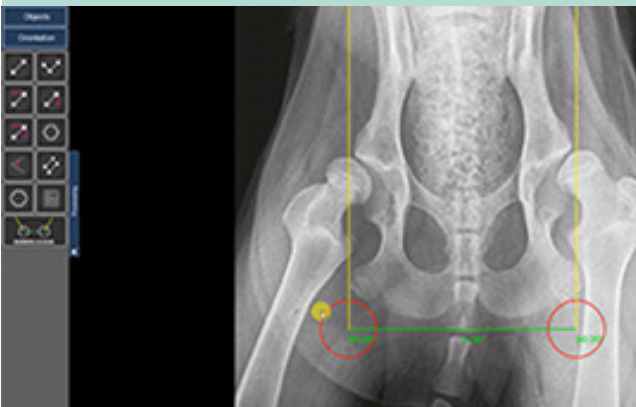
| Direct deposition CsI for better image quality with lower dose |
| Highly reliable, flexible tether |
| Supports a fast and efficient workflow |

Cassette detector per ISO 4090, fits in bucky
139 µm pixel pitch, with 16 bit ADC for more image details
Stable iSync+ Automatic Exposure Detection (AED)

Digivet C is 43x43cm tethered cassette- sized FPD for radiographic imaging.
It features reliable 139 µm pixel pitch with direct deposition CsI, and with a reliable AED enables a smart workflow.
It is the optimal choice for a high-end DR system.

Innovative a-Si
Cassette-Size Portable
Flat Panel Detector

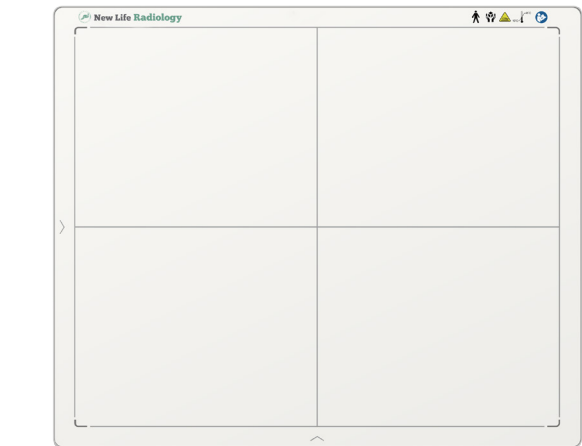
Detector Technology	Amorphous Silicon
Scintillator	CsI
Active Area (cm)	43 x 43
Pixel Matrix	3072 × 3072
Pixel Pitch (µm)	139
Spatial Resolution (lp/mm)	3.6
AD Conversion (bit)	16
Data transmission	GigE
Trigger Mode	AED (Optional) / Software
Preview Image Time	3
Full Image Time (s)	5
Dimensions (mm³)	460 × 460 × 15
Weight (kg)	4
Power Dissipation (W)	30
Operating Temperature (°C)	5 ~ 35
Storage&TransportTemperature with Package (°C)	-10 ~ 55
Operating Humidity (% RH)	30~ 80 (Non-Condensing)
Storage&TransportHumidity with Package(% RH)	10~ 90 (Non-Condensing)



Provided with the most advanced Imaging Software for Veterinary (Total Body) with Norberg-Olsson Measure angle included

Cassette-Size Flat Panel
Detector
Designed for Digital
Radiography

Detector Technology	Amorphous Silicon
Scintillator	CsI
Active Area (cm)	35 x 43
Pixel Matrix	2304 x 2800
Pixel Pitch (µm)	150
Spatial Resolution (lp/mm)	3.4
AD Conversion (bit)	16
Battery Autonomy (h)	8
WIFI	2.4Gand5G,IEEE802.11 a/b/g/n/ac
Trigger Mode	AED (Optional) / Software
Internal Image Storage	200 full size images
Full Image Time (s)	5
Dimensions (mm³)	384 x 460 x 15
Weight (kg)	3.3
Static Loading	150 kg Uniformly
Ingress Protection	IPX1
Operating Temperature (°C)	5 ~ 35
Storage&TransportTemperature with Package (°C)	-20 ~ 55
Operating Humidity (% RH)	10 ~ 90 (Non-Condensing)
Storage&TransportHumidity with Package(% RH)	5 ~ 95 (Non-Condensing)



| Dual band (2.4 and 5 GHz) wireless support with easy sharing |
| Long battery life and smart workflow |
| Direct deposition CsI for better image quality with lower dose |

Wireless cassette detector per ISO 4090, fits in bucky
150 µm pixel pitch, with 16 bit ADC for more image details
Stable iSync+ Automatic Exposure Detection (AED)

Digivet W35 is a smart 35x43cm wireless, cassette-sized FPD for radiographic imaging. It features reliable AED, dependable wireless performance, and a long battery life. Digivet W35 supports a fast work, and is the optimal choice for both retrofit and new DR system solutions.

DIGIVET

3 years warranty

DIGIVET W43

(43x43cm 139µm)



| Dual band (2.4 and 5 GHz) wireless support with easy sharing |
| Long battery life and smart workflow |
| Direct deposition CsI for better image quality with lower dose |

Wireless cassette detector per ISO 4090, fits in bucky
139 µm pixel pitch, with 16 bit ADC for more image details
Stable iSync+ Automatic Exposure Detection (AED)

Digivet W43 is a smart 43x43cm wireless, cassette-sized FPD for radiographic imaging. It features reliable AED, dependable wireless performance, and a long battery life. Digivet W43 supports a fast work flow, and is the optimal choice for both retrofit and new DR system solutions.

Superior 43x43cm
Cassette-Size Flat Panel Detector

Detector Technology	Amorphous Silicon
Scintillator	CsI
Active Area (cm)	43 x 43
Pixel Matrix	3072 × 3072
Pixel Pitch (µm)	139
Spatial Resolution (lp/mm)	3.6
AD Conversion (bit)	16
Battery Autonomy (h)	8
WIFI	2.4Gand5G,IEEE802.11 a/b/g/n/ac
Trigger Mode	AED (Optional) / Software
Internal Image Storage	200 full size images
Full Image Time (s)	5
Dimensions (mm³)	460 × 460 × 15
Weight (kg)	4.6
Static Loading	150 kg Uniformly
Center Loading	135 kg @ 4 cm
Ingress Protection	IPX1
Operating Temperature (°C)	5 ~ 35
Storage&TransportTemperature with Package (°C)	-20 ~ 55
Operating Humidity (% RH)	10 ~ 90 (Non-Condensing)
Storage&TransportHumidity with Package(% RH)	5 ~ 95 (Non-Condensing)



The size of the DIGIVET panels allows it to be easily inserted into any existing cassette holder

High-Performance Flexible
Wireless a-Si Flat Panel
Detector

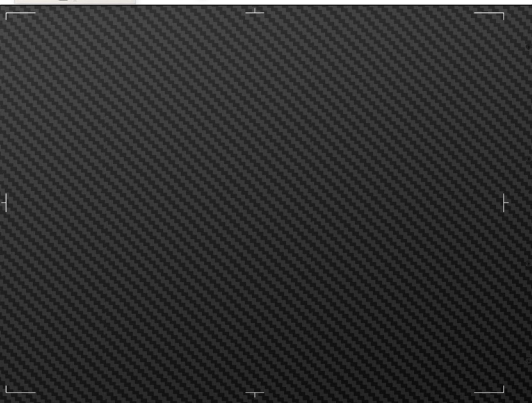
Detector Technology	Flexible
Scintillator	CsI
Active Area (cm)	25 x 33
Pixel Matrix	2526 × 3318
Pixel Pitch (µm)	100
Spatial Resolution (lp/mm)	3.4
AD Conversion (bit)	16
Battery Autonomy (h)	8.5 h @ 90 s cycle
Data Interface	WiFi / Tethered
Trigger Mode	AED (Optional) / Software
Preview Image Time (s)	Typ. 1.5
Cycle Time (s)	Typ. 4.5
Dimensions (mm³)	269 × 362 × 16
Weight (kg)	2.0
Drop Height (cm)	120cm@3mmPVCwithprotect frame
Ingress Protection	IPX5
Operating Temperature (°C)	10 ~ 35
Storage&TransportTemperature with Package (°C)	-20 ~ 60
Operating Humidity (% RH)	5~ 90 (Non-Condensing)
Storage&TransportHumidity with Package(% RH)	5 ~ 95 (Non-Condensing)

Digivet Equine is a new generation, high-performance 25x33cm wireless FPD developed on a flexible substrate. It features a 100 µm pixel pitch with direct deposition CsI. The cutting-edge flexible panel technology, features a strong, yet lightweight design with IP66 ingress protection, in-tray battery charging, and reliable, low power AED. With its exceptional image quality the Digivet Equine is an excellent choice for equine and EOD applications



DIGIVET EQUINE

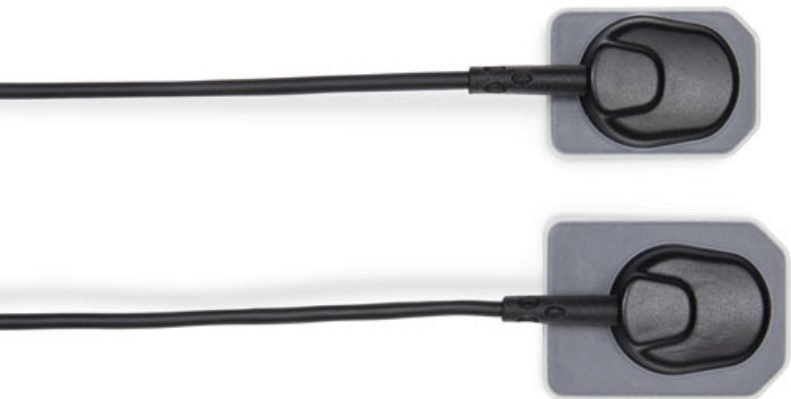
(25x33cm 100µm)



| Unbreakable a-Si sensor developed on flexible substrate |
| Full AED control, exposure at any time |
| Large capacity battery design, with 8+ hours battery life |
| Lightweight design with IPX5 ingress protection |
| Supports a fast workflow for a better user experience |

Narrow border design
(dead space: 7 mm / 7 mm / 9.6 mm)
Flexible panel substrate for ultimate strength
Best-in-class 100 µm pixel pitch with 16-bit ADC for more image details
Direct deposition CsI, with excellent DQE at all frequencies

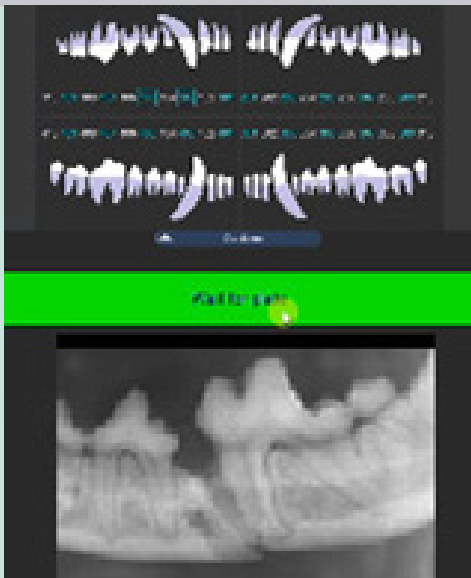
INTRAORAL VET X-Rays



DIGISENS HD

- CMOS intraoral sensor HD
- 28 l/p real resolution
- one of the highest resolution in all VET Dental market**
- 2.7m USB cable lenght
- available as size 1 (active area mm20,00 x 30,01) as well as size 2 (active area mm25,95 x 37,96)
- very strong connection between cable and sensor

Provided with the most advanced Imaging Software for Veterinary (Intraoral)



BEST-X-DC WITH PALMTOP TIM-X

- High Frequency intraoral x-ray
- 60/70kv selectable
- 4/7mA selectable
- 0.3mm focal spot
- the smallest focal spot in all VET Dental market**
- dosimeter on board
- available in wall as well as in mobile (on wheel) version



DIGISKAN PRO

- USB & Ethernet Phosphor Plate Scanner
- Top-loading design
- 25 l/p theoretical resolution
- light (only 3.7Kg)
- small (196mm x 140mm x 213mm)
- fast (only 5 sec scanning time)
- one of the fastest PSP in all VET Dental market**
- unique "clear and clean mode" for a longer duration of DIGISKAN PRO and its phosphor plates
- multiple sizes format reading (0,1,2,3)

DIGISENS HD

Parameter	Unit	Size 1	Size 2
Sensor Type	-	CMOS Photodiode Array	
X-ray convertor	-	FOS (FOP + CsI)	
Dimensions (W x L x H)	mm	25,4 x 363 x 4,8	31,3 x 42,9 x 4,8
Weight	gr	Less than 100	
Pixel Size	µm	18	
Active Area	mm	20,00 x 30,01	25,95 x 37,96
Effective Area*	mm	19,80 x 29,80	25,77 x 37,78
Number of Active Pixels	pixels	1110 x 1666	1442 x 1998
Number of Effective Pixels	pixels	1100 x 1656	1432 x 1988
Data output	-	USB 2.0	
USB cable length	m	Less than 2.7	
Electrical rating		DC 5V. 500 mA	
Operation mode		Global shutter	
Protection against water		IP68	
* X-Ray sensitive area			

DIGISKAN PRO

Dimensions	196 mm x 140 mm x 213 mm
Weight	3.7 kg
Voltage	AC 100-240V, 50-60Hz
Theoretical Resolution	25 lp/mm
Scan Time	about 5 seconds
Connection Type	USB 2.0 /USB 3.0 /Ethernet
Plate Sizes	Size #0, #1, #2, #3
Plate Erasing	Automatic
Software	TWAIN Compatible / DICOM 3.0

BEST-X-DC WITH PALMTOP TIM-X

Classification	Class I Electro-medical Apparatus with type-B part applied
Head	Constant potential radiographic managed by microprocessor
Rated electrical power	0,800kW
High frequency technology	100kHz
Focal spot	0,3 mm (IEC 336)
Absorption	6A
Tube Toshiba	OX/70-3
Ø of long cone at the end of spacer	<6 cm
Total filtration	2 mm Al eq.
Selectable anodic current	4-6,5 mA
Selectable voltage to x-ray tube	60-70 kVp
Dispersed radiation	≤ 0,25 mGy/h a 1meter from focus 1
Exposure time	20 ms – 1000 ms scala R10
Intermittent operationPower supply	230 V ± 10%
Intermittent operation	1 s exposure: 30 s reset max
Distance	F.F. 20 cm
Fuse	F 6,3 A H
Deadman logic control	wireless



Head Office & Production Plant
Corso Giuseppe Canonico Allamano 13/15 Int. G
10095 | Grugliasco (TO) | Italy
www.newliferadiology.it
info@newliferadiology.it

Authorized Dealer

